

Knowing Your Rotary Position

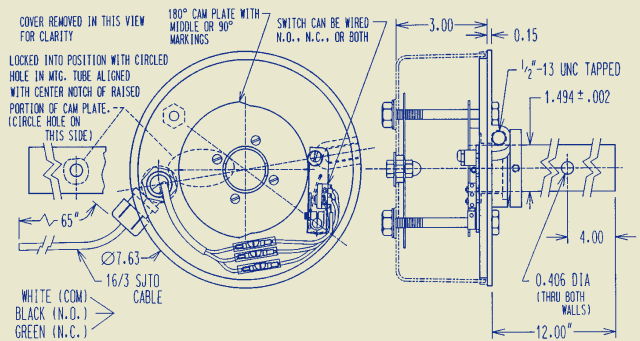
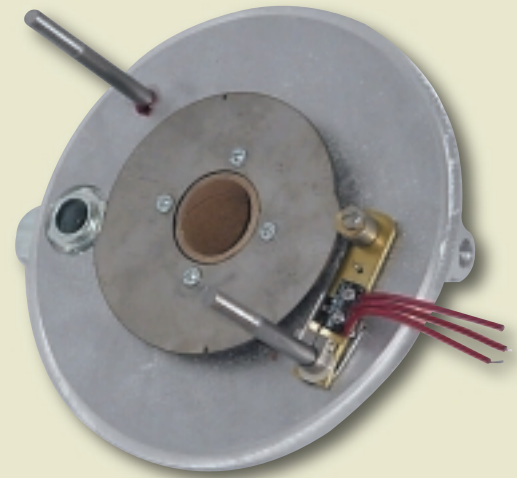
UEA Slip Rings are always in the center of a 360° rotation. Various rotary applications are improved by the ability to sense a single position, multiple positions, or to define one or more areas. This sensing of position allows customer defined functions to operate within the requirements of each individualized application.

UEA offers two position sensing systems which both provide a high degree of accuracy. The Cam & Switch Design is our most popular system offering accurate performance for up to 3 defined areas. Potentiometers are designed for use in applications requiring variable position indication.

Both position sensing systems were conceptualized for the UEA 1.5" bore ring model, but either system can be adapted to our larger bore models. The Cam & Switch Design and the Continuous Through-bore Potentiometer are installed near the slip ring base casting and bearing, eliminating inaccuracies caused by brush and core stud flexing. This also leaves the center bore open through the slip ring assembly for air lines, linkage, etc. The 2.00" O.D. Potentiometer is mounted above the center lead connections at the top of the assembly. This allows easier replacement of the potentiometer if necessary.

Cam & Switch Design Features

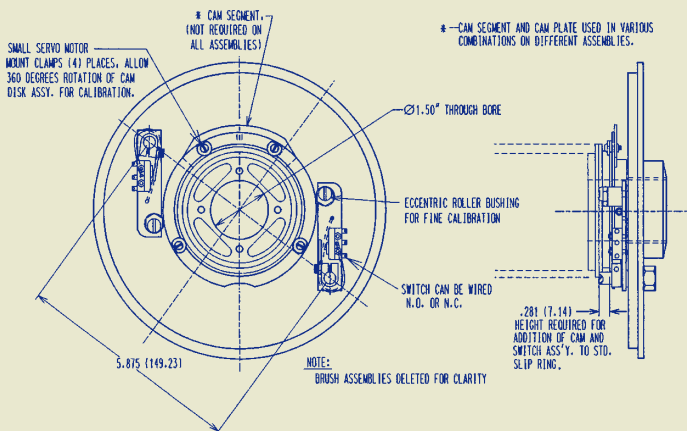
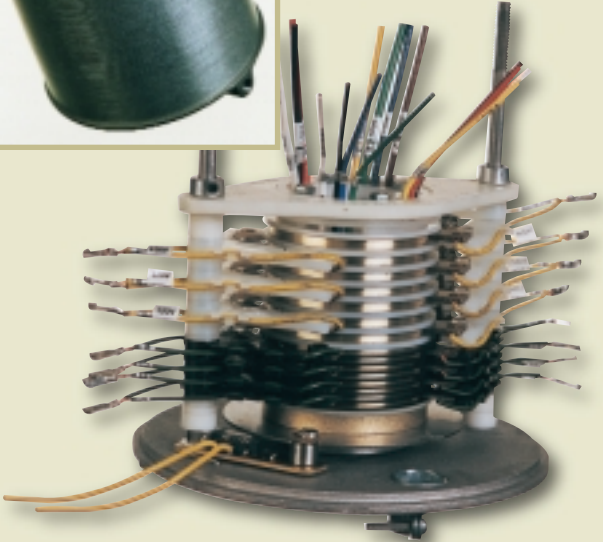
- Factory set accuracies of $\pm 0.5^\circ$
- 1, 2, or 3 switches and areas defined using one cam
- Cam and switch(es) add 0.28125" to overall height of slip ring assembly
- Spring loaded cam arms with switch(es) located at bottom of one or both brush stacks
- Cam built into or onto the bottom of the core stack
- Stacks in standard 1.5" bore UEA Slip Ring assembly
- Easily installed under any UEA standard cover

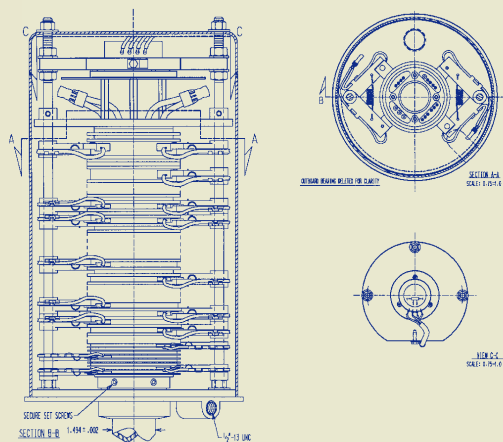


Cam & Switch



Model S15A w/Cam & Switch





2.0" O.D. Potentiometer

- Can be used on top of longer non-through bore assembly
- Two Wipers Spaced At $90^\circ \pm 0.5\%$
- Tap Width 2° max.

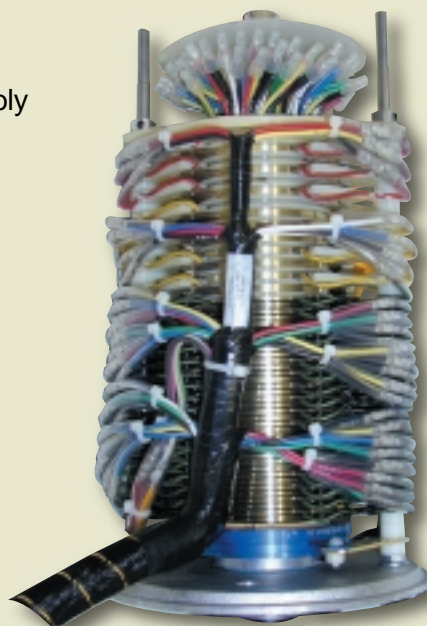
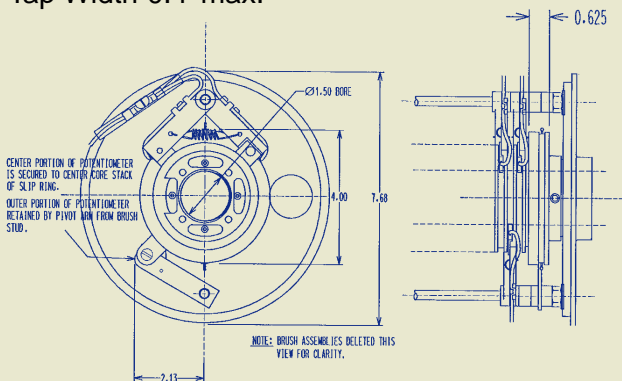
Model S15A Pre-wired w/2.0" O.D. Potentiometer

Continuous Potentiometer Design Features (For Both Models)

- 360° continuous rotation
- Infinite position indication
- $2.5K \pm 10\%$ per quadrant
- $2.5K \pm 10\%$ between taps @ 180°
- Two tap spaces at $180^\circ \pm 0.1\%$
- Linearity 0.10% max.
- Easily installed under any UEA standard cover

Through-Bore Potentiometer

- Adds 0.625" to overall slip ring height
- Stacks in standard 1.5" bore UEA Slip Ring assembly
- No special brackets or drive mechanism required
- Two Wipers Spaced At $90^\circ \pm 0.1\%$
- Tap Width 0.4° max.



Model S15A Pre-wired w/Through Bore Potentiometer